

# iBoard®

## iBoard® by APS

PART#: IB-258A&B

READ INSTRUCTIONS CAREFULLY BEFORE STARTING INSTALLATION. REMOVE CONTENTS FROM BOX AND VERIFY ALL PARTS ARE PRESENT. ASSISTANCE IS RECOMMENDED.

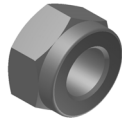
\*ROCKER PANEL MOUNT  
\*NO DRILLING REQUIRED

Fastener Size	Tightening Torque (ft-lbs)
6mm	6-7
8mm	16-18
10mm	31-32
12mm	56-58
14mm	92-94

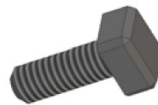
Item	QTY	Description	Item	QTY	Description
1#	6	Mounting Brackets	4#	12	M6X1-20mm Square Head Bolts
2#	12	M8 Large Flat Washers	5#	12	M6 Large Flat Washers
3#	12	M8X1.25 Nylon Lock Nuts	6#	12	M6X1 Nylon Lock Nuts



2 #



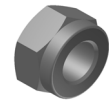
3 #



4 #



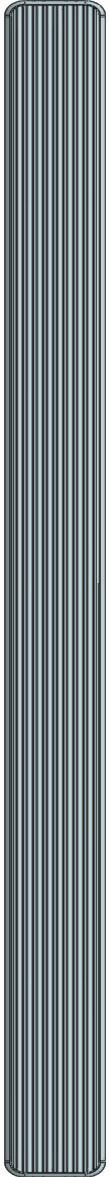
5 #



6 #

# iBoard®

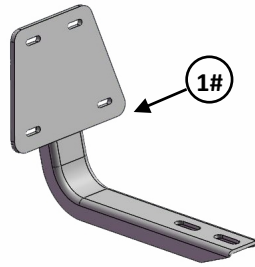
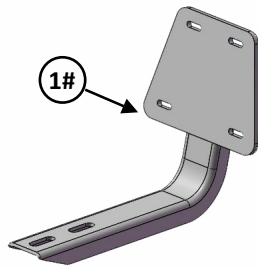
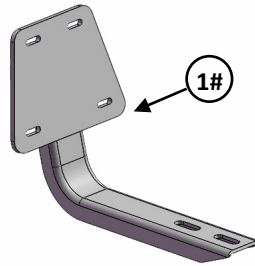
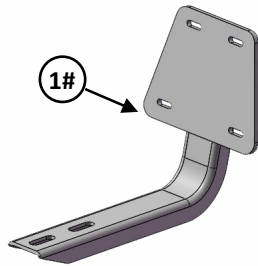
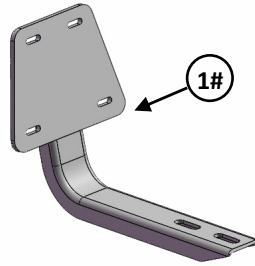
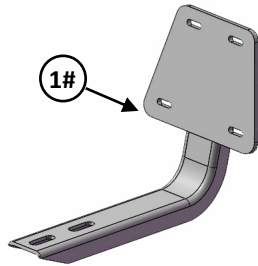
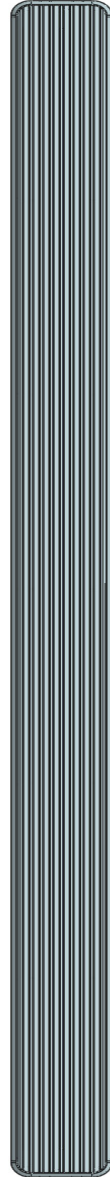
Driver



Front



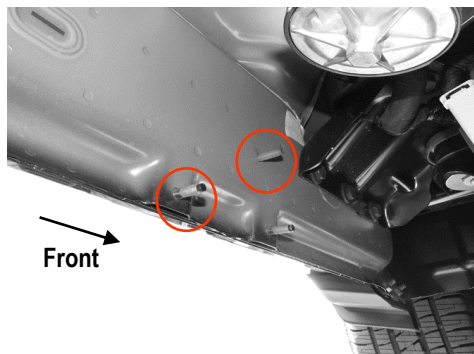
Passenger



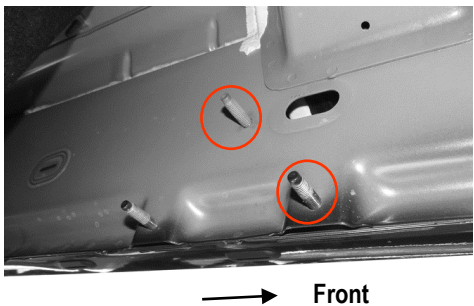
# iBoard®

## STEP 1

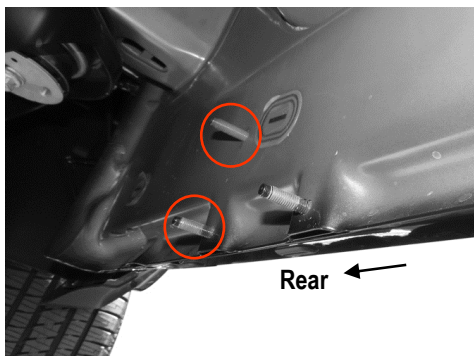
Start the installation under the driver side of the vehicle. Locate the front (3) factory studs along the inner side of the body panel, (Fig 1-3). **NOTE:** Chase threads on the studs first before installing Brackets to remove paint buildup. **Only two studs could be used on each mounting location.**



(Fig 1) Driver Front Mounting Bracket Location



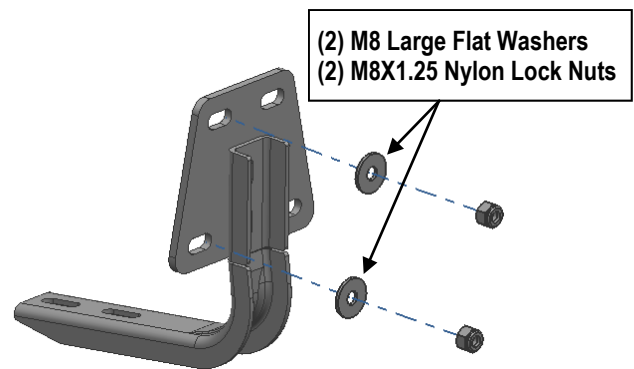
(Fig 2) Driver Center Mounting Bracket Location



(Fig 3) Driver Rear Mounting Bracket Location

## STEP 2

Select (1) Mounting Bracket. **NOTE: All (6) Mounting Brackets are universal and will fit driver or passenger side.** Attach the Mounting Bracket to the (2) factory studs on the Driver Side Front Mounting Bracket Location with (2) M8 Large Flat Washers and (2) M8X1.25 Nylon Lock Nuts, (Fig 4). Leave bracket loose at this time.



(Fig 4) Driver Front Mounting Bracket Installed

## STEP 3

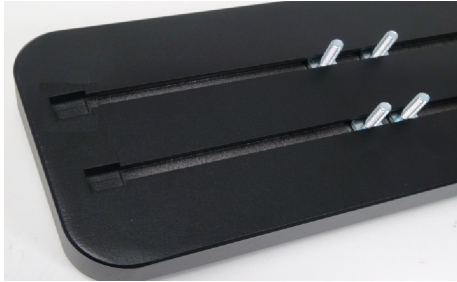
Repeat **Steps 1—2** to install the (2) remaining Driver Center and Rear Mounting Brackets.

## STEP 4

Select a Running Board. Slip (3) M6x1-20mm Square Head Bolts into each bottom channel, (Fig 5). Carefully position the Running Board onto the (3) Mounting Brackets.

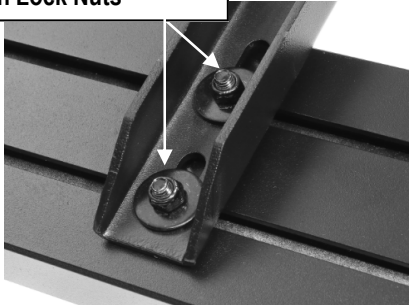
**IMPORTANT:** Do not slide the Running Board on the Brackets or the bottom surface of the board will be damaged. Attach the Running Board to each Mounting Brackets with (2) M6x1-20mm Square Head Bolts, (2) M6 Large Flat Washers and (2) M6 X1 Nylon Lock Nuts, (Fig 6). Do not tighten at this time.

# iBoard®



(Fig 5) Slip M6X1-20mm Square Head Bolts Into The Bottom Channels

- (2) M6X1-20mm Square Head Bolts
- (2) M6 Large Flat Washers
- (2) M6X1 Nylon Lock Nuts



(Fig 6) Running Board Installed Onto Mounting Bracket

## STEP 5

Level and adjust the Running Board and fully tighten all hardware.

## STEP 6

Repeat **Steps 1-5** for the other side Running Board installation. The installation is completed.

### Attention

Do periodic inspections to the installation to make sure that all hardware is secure and tight.

In order to protect your bars/boards, please use only mild soap/non-abrasive products for cleaning.