

iBoard®

iBoard® by APS

PART#: IB-175A-B

READ INSTRUCTIONS CAREFULLY BEFORE STARTING INSTALLATION. REMOVE CONTENTS FROM BOX AND VERIFY ALL PARTS ARE PRESENT. ASSISTANCE IS RECOMMENDED.

*ROCKER PANEL MOUNT
*NO DRILLING REQUIRED

Fastener Size	Tightening Torque (ft-lbs)
6mm	6-7
8mm	16-18
10mm	31-32
12mm	56-58
14mm	92-94

PART LIST

Note: All (6) Mounting Brackets Are Universal.



Front ↑

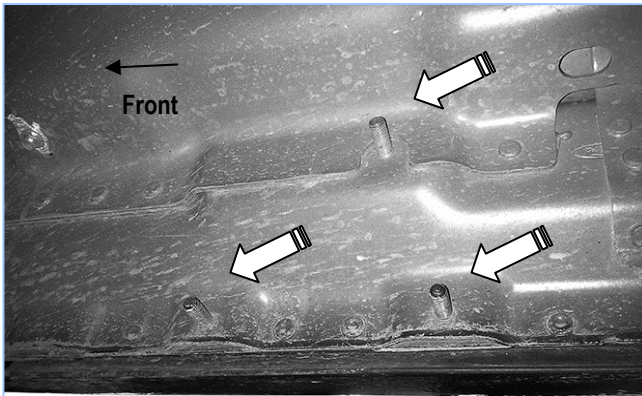
Driver Front Mounting Bracket	X1	Passenger Front Mounting Bracket	X1
Driver Center Mounting Bracket	X1	Passenger Center Mounting Bracket	X1
Driver Rear Mounting Bracket	X1	Passenger Rear Mounting Bracket	X1
8mm Plastic Washer	X18	M8 Large Flat Washer	X18
M6X1-20mm Square Head Bolt	X12	M6 Large Flat Washer	X12
		M8X1.25 Nylon Lock Nut	X18
		M6X1 Nylon Lock Nut	X12

Customer Support: info@iboardauto.com

iBoard®

STEP 1

Start the installation under the passenger side of the vehicle. Locate the front factory running board mounting location along the inner side of the body, (Fig 1).



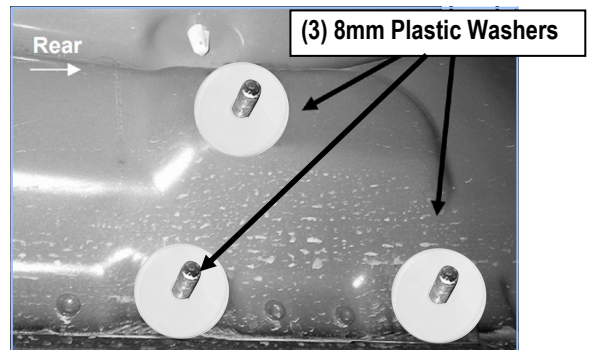
(Fig 1) Passenger Front Mounting Bracket Location

STEP 2

Slide (1) 8mm Plastic Washer over each factory mounting stud in the body panel, (Fig 2 & 3). **IMPORTANT:** The 8mm Plastic Washers are designed to prevent corrosion between the aluminum body panel and the steel mounting brackets. **Do not install the Brackets without the Plastic Washers.**



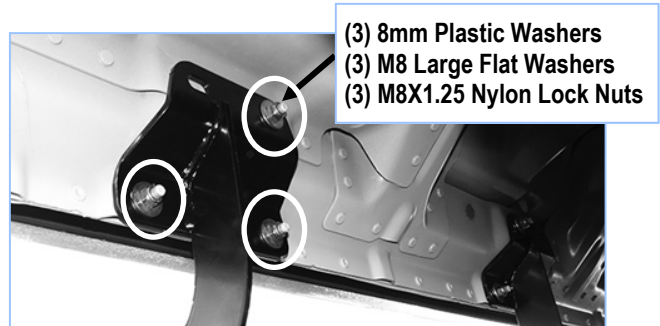
(Fig 2) 8mm Plastic Washer



(Fig 3) Thread 8mm Plastic Washers Onto All Mounting Studs. Passenger Side Rear Mounting Bracket Location Pictured

STEP 3

Select (1) Mounting Bracket. **NOTE: All (6) Mounting Brackets are universal and will fit driver or passenger side.** Attach the Mounting Bracket to the (3) factory studs on Passenger Side Front Mounting Location with (3) M8 Large Flat Washers and (3) M8X1.25 Nylon Lock Nuts, (Fig 4). Snug but do not fully tighten the hardware.



(Fig 4) Passenger Front Mounting Bracket Installed

STEP 4

Repeat **Steps 1—3** to install the (2) remaining Passenger Center and Rear Mounting Brackets.

iBoard®

STEP 5

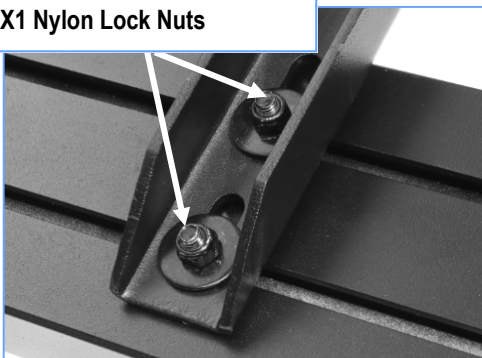
Select a Running Board. Slip (3) M6x1-20mm Square Head Bolts into each bottom channel (**Fig 5**). Carefully position the Running Board onto the (3) Mounting Brackets.

IMPORTANT: Do not slide the Running Board on the Brackets or the bottom surface of the board will be damaged. Attach the Running Board to each Mounting Brackets with (2) M6x1-20mm Square Head Bolts, (2) M6 Large Flat Washers and (2) M6 X1 Nylon Lock Nuts (**Fig 6**). Do not fully tighten at this time.



(Fig 5) Slip (3) M6X1-20mm Square Head Bolts Into Each Bottom Channel

(2)M6X1-20mm Square Head Bolts
(2)M6 Large Flat Washers
(2)M6X1 Nylon Lock Nuts



(Fig 6) Running Board Installed Onto Mounting Bracket

STEP 6

Level and adjust the Running Board and fully tighten all hardware.

STEP 7

Repeat **Steps 2-6** for the other side Running Board installation. The installation is completed (**Fig 7**).



(Fig 7) Installation Completed

Attention

Do periodic inspections to the installation to make sure that all hardware is secure and tight.

In order to protect your bars/boards, please use only mild soap/non-abrasive products for cleaning.