

iBoard®

iBoard® by APS

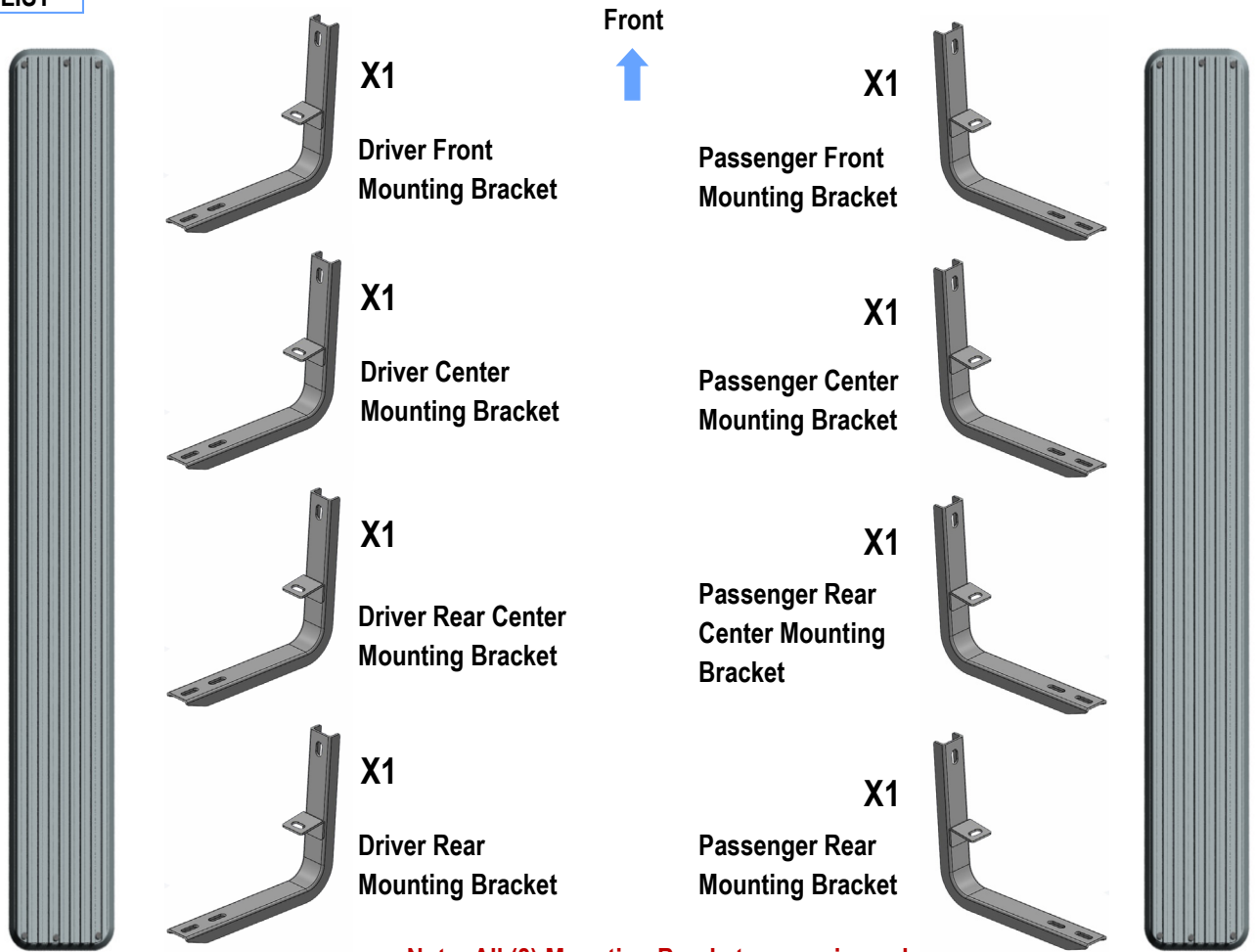
PART#: IB-171A-B

READ INSTRUCTIONS CAREFULLY BEFORE STARTING INSTALLATION. REMOVE CONTENTS FROM BOX AND VERIFY ALL PARTS ARE PRESENT. ASSISTANCE IS RECOMMENDED.

*ROCKER PANEL MOUNT
*NO DRILLING REQUIRED

| Fastener Size | Tightening Torque (ft-lbs) |
|---------------|----------------------------|
| 6mm | 6-7 |
| 8mm | 16-18 |
| 10mm | 31-32 |
| 12mm | 56-58 |
| 14mm | 92-94 |

PART LIST



Note: All (8) Mounting Brackets are universal.

Customer Support: info@iboardauto.com

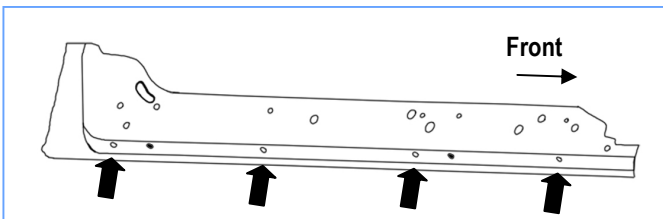
iBoard®



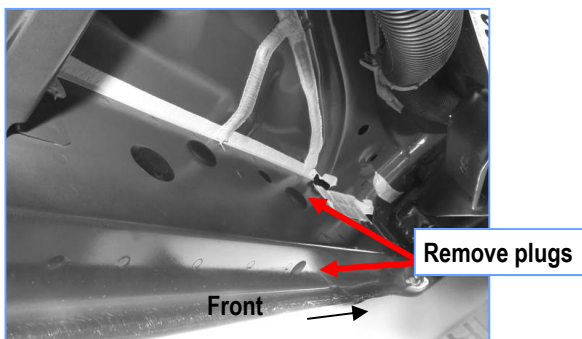
STEP 1

Start the installation under the driver side of the vehicle. Locate the 6 plugs along the bottom edge of the body. Mounting Brackets will bolt to the 1st, 3rd, 4th and 6th threaded mounting holes, (Fig 1-6). Remove the plastic plugs from each mounting location. Directly above each threaded insert is a top mounting location on the side of the body panel. Hold a Mounting Bracket up in place to help determine the mounting holes to use along the body.

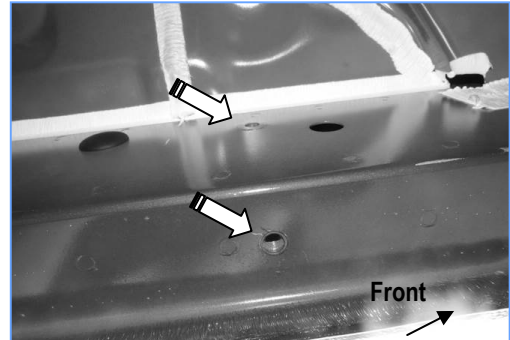
NOTE: Thread an M8X1.25-30mm Hex Bolt into the threaded inserts to clear paint as required.



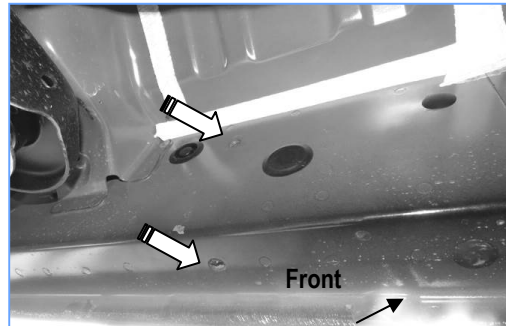
(Fig 1) Driver Side Rocker Panel Mounting Locations Illustrated (Arrows) NOTE: Hold Bracket Up To Body Panel To Help Determine The Correct Mounting Locations.



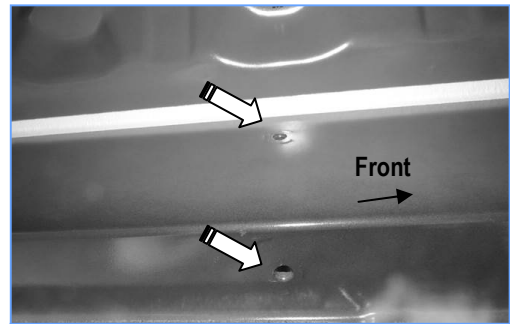
(Fig 2) Remove Plastic Plugs To Uncover Threaded Inserts



(Fig 3) Driver Front Mounting Bracket Location

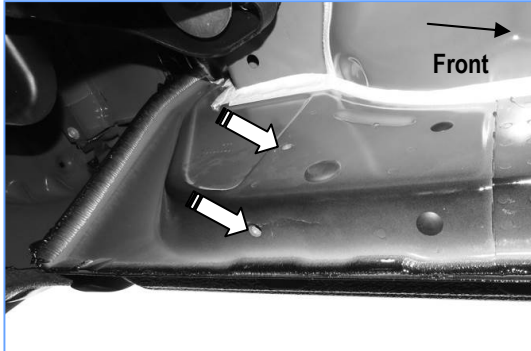


(Fig 4) Driver Center Mounting Bracket Location



(Fig 5) Driver Rear Center Mounting Bracket Location

iBoard®

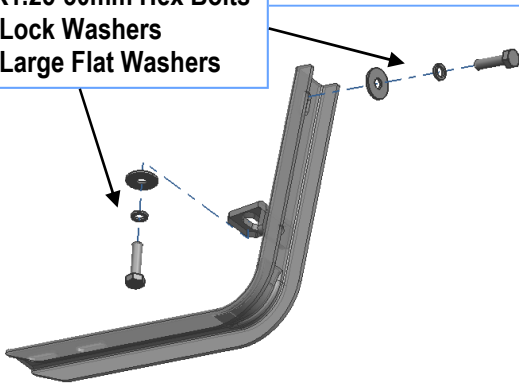


(Fig 6) Driver Rear Mounting Bracket Location

STEP 2

Select Driver Front Mounting Bracket. **Note: All (8) Mounting Brackets are universal.** Starting at the front of the side, bolt the Driver Front Mounting Bracket to the factory threaded holes with (2) M8X1.25-30mm Hex Bolts, (2) M8 Lock Washers and (2) M8 Large Flat Washers (Fig 7). Do not fully tighten hardware at this time.

- (2) M8X1.25-30mm Hex Bolts
- (2) M8 Lock Washers
- (2) M8 Large Flat Washers



(Fig 7) Attach Driver Front Mounting Bracket To The Vehicle

STEP 3

Repeat **Steps 1 & 2** to install (3) Mounting Brackets on the remaining driver side mounting locations along the body panel.

STEP 4

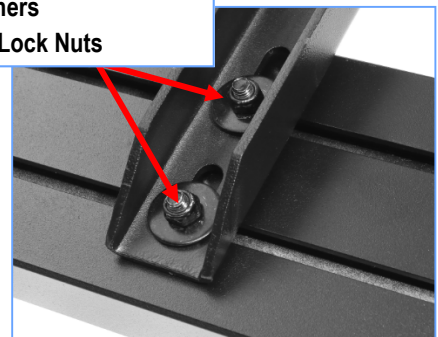
Select a Running Board. Slip (4) M6x1-20mm Square Head Bolts into each bottom channel (Fig 8). Carefully position the Running Board onto the (4) Mounting Brackets.

IMPORTANT: Do not slide the Running Board on the Brackets or the bottom surface of the board will be damaged. Attach the Running Board to each Mounting Brackets with (2) M6x1-20mm Square Head Bolts, (2) M6 Large Flat Washers and (2) M6 X1 Nylon Lock Nuts (Fig 9). Do not fully tighten at this time.



(Fig 8) Slip (4) M6X1-20mm Square Head Bolts Into Each Bottom Channel

- (2)M6X1-20mm Square Head Bolts
- (2)M6 Flat Washers
- (2)M6X1 Nylon Lock Nuts



(Fig 9) Running Board Installed Onto Mounting Bracket

iBoard®

STEP 5

Level and adjust the Running Board and fully tighten all hardware.

STEP 6

Repeat **Steps 2-5** for the other side Running Board installation. The installation is completed (**Fig 10**).



(Fig 10) Installation Completed

Attention

Do periodic inspections to the installation to make sure that all hardware is secure and tight.

In order to protect your bars/boards, please use only mild soap/non-abrasive products for cleaning.