

# iBoard®

## iBoard® by APS

PART#: IB-058A-B

READ INSTRUCTIONS CAREFULLY BEFORE STARTING INSTALLATION. REMOVE CONTENTS FROM BOX AND VERIFY ALL PARTS ARE PRESENT. ASSISTANCE IS RECOMMENDED.

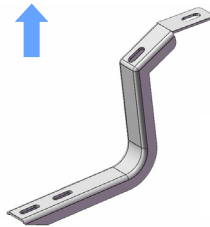
\*ROCKER PANEL MOUNT  
\*NO DRILLING REQUIRED

Fastener Size	Tightening Torque (ft-lbs)
6mm	6-7
8mm	16-18
10mm	31-32
12mm	56-58
14mm	92-94

### PART LIST

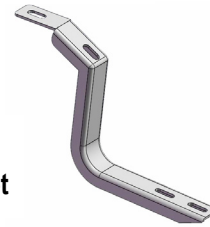
Front  
↑

Note: \* (2) Front Mounting Brackets Are Universal.  
\*(4) Center & Rear Mounting Brackets Are Universal.



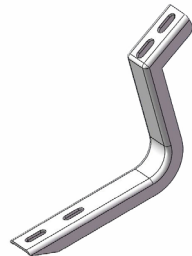
X1

Driver Front Mounting Bracket



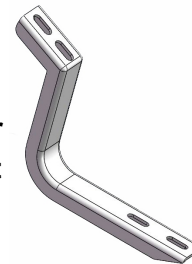
X1

Passenger Front Mounting Bracket



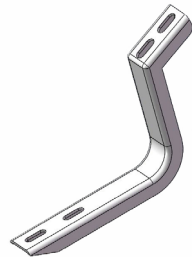
X1

Driver Center Mounting Bracket



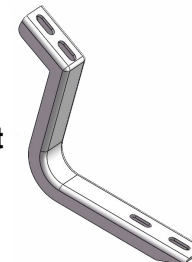
X1

Passenger Center Mounting Bracket



X1

Driver Rear Mounting Bracket



X1

Passenger Rear Mounting Bracket



X12

M8X1.25-30mm Hex Bolt



X12

M8 Flat Washer



X12

M8 Lock Washer



X12

M6X1-20mm Square Head Bolt



X12

M6 Large Flat Washer



X12

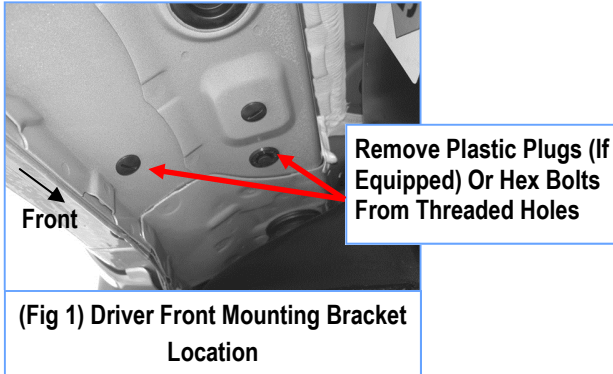
M6X1 Nylon Lock Nut

Customer Support: [info@iboardauto.com](mailto:info@iboardauto.com)

# iBoard®

## STEP 1

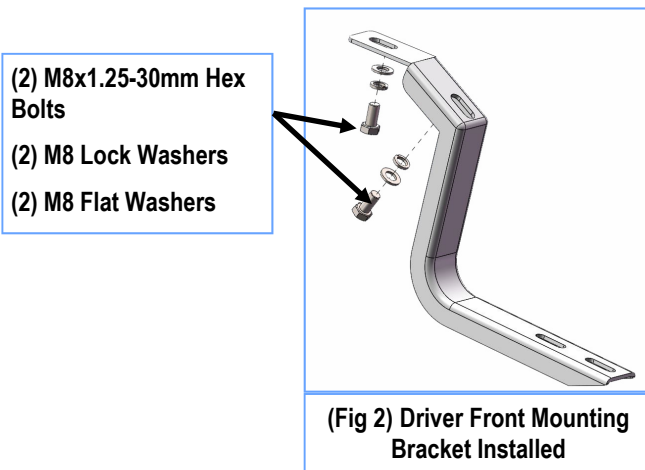
Starting on the driver side front of the vehicle, remove the existing (2) factory bolts, (or plastic plugs) (Fig 1). This will be the mounting location for the Driver Front Mounting Bracket.



## STEP 2

Select the Driver Front Mounting Bracket, attach the Bracket to the vehicle using the included (2) M8x1.25-30mm Hex Bolts, (2) M8 Lock Washers and (2) M8 Flat Washers, (Fig 2). Do not fully tighten hardware at this time.

**Note:** All (2) Front Mount Brackets are universal.

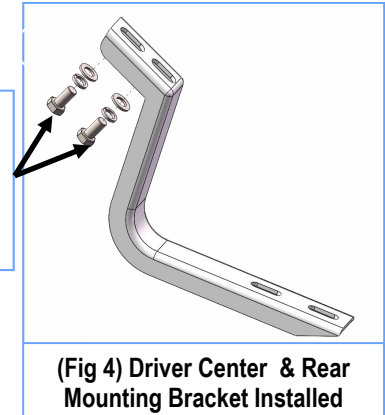


## STEP 3

Move along the side panel to the Driver Side Center and Rear Mounting Locations, (Fig 3). Repeat Step 1 & 2 to install the Driver Center & Rear Mounting Brackets, (Fig 4). **Note:** The (4) mounting brackets for driver/passenger side center and rear are universal.



- (2) M8x1.25-30mm Hex Bolts
- (2) M8 Lock Washers
- (2) M8 Flat Washers



## STEP 4

Select a Running Board. Slip (3) M6x1-20mm Square Head Bolts into each bottom channel (Fig 5). Carefully position the Running Board onto the (3) Mounting Brackets.

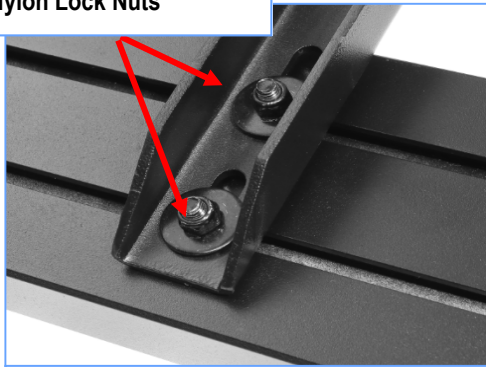
**IMPORTANT:** Do not slide the Running Board on the Brackets or the bottom surface of the board will be damaged. Attach the Running Board to each Mounting Brackets with (2) M6x1-20mm Square Head Bolts, (2) M6 Large Flat Washers and (2) M6 X1 Nylon Lock Nuts (Fig 6). Do not tighten at this time.

# iBoard®



(Fig 5) Slip M6X1-20mm Square Head Bolts Into The Bottom Channels

(2)M6X1-20mm Square Head Bolts  
(2)M6 Large Flat Washers  
(2)M6X1 Nylon Lock Nuts



(Fig 6) Running Board Installed Onto Mounting Bracket

## STEP 5

Level and adjust the Running Board as necessary and fully tighten all hardware.

## STEP 6

Repeat **Steps 1-5** for the passenger side Running Board installation. The installation is completed (**Fig 7**).



(Fig 7) Installation Completed

### Attention

Do periodic inspections to the installation to make sure that all hardware is secure and tight.

In order to protect your bars/boards, please use only mild soap/non-abrasive products for cleaning.